

**MWP**

RECEIVED: 19/12/2025

**Appendix 6A – Photographic Plates**  
**Ballynisky Wind Farm**

**Ballynisky Green Energy Ltd.**

**December 2025**



Plate 6-1: Trailcam set out on the 15<sup>th</sup> October (trailcam 5, left) and 20<sup>th</sup> December 2022 (trailcam 4, right)



Plate 6-2: Overview of typical improved agricultural grassland habitat GA1 (left). Typical site hedgerow WL1 (right).



Plate 6-3: Typical managed hedgerow WL1 present at proposed T5 (left). Typical drainage ditch FW4 (right).



Plate 6-4: 'Stone wall and other stonework (BL1)' with ivy cover (left). Treeline WL2 and 'spoil and bare ground ED2' (right).



Plate 6-5: Examples of drainage ditches at the site



Plate 6-6: Drainage ditch in March 2022 (left) and in May 2023 (right).



Plate 6-7: The Ahacronane River FW2 (left). Scrub WS1 at location of proposed track to T3 (right).



Plate 6-8: Overview of *Molinia* dominated wet grassland GS4 present within the location of a proposed site access track (left). Wet grassland GS4 and scrub WS1 area associated with the proposed location of T2 and associated access track (right).



Plate 6-9: Close up of typical species poor/rank *Molinia* dominated wet grassland GS4 community present within the location of a proposed 5m site access track.



Plate 6-10: Wet grassland GS4 present within improved agricultural grassland GA1 to the north (left). Poor fen and flush PF2 to the south east of T6 (right).



Plate 6-11: Badger footprint in woodland to the west of proposed infrastructure (left). Badger snuffle hole (right).

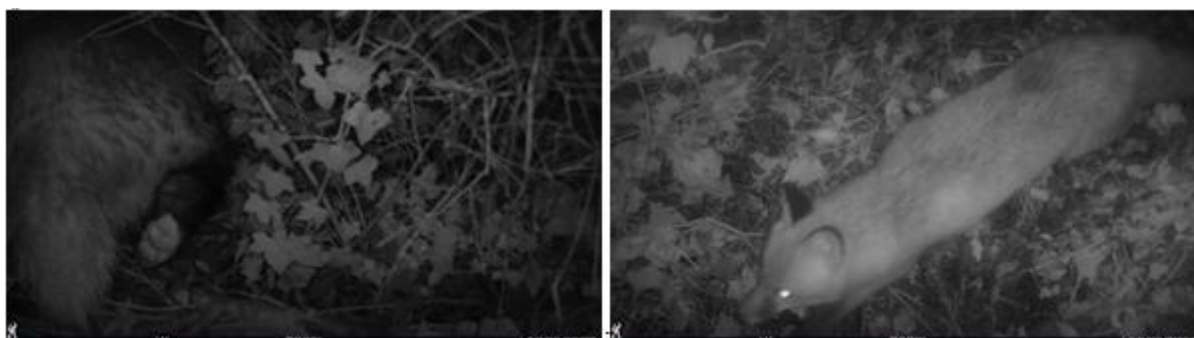


Plate 6-12: Badger at trail camera 6 (left) and fox at trail camera 1 (right).



Plate 6-13: Pheasants at trail camera 4.



Plate 6-14: Hare at trail camera 10 (left) and fox at trail camera 5 (right).



Plate 6-15: Seven-spot ladybird and small tortoiseshell encountered at the site during May 2022.



Plate 6-16: Noon fly and green dock beetle encountered at the site during May 2022.



Plate 6-17: Common cockchafer (left) and small tortoiseshell *Aglais urticae* (right).



Plate 6-18: Mature ash trees in hedgerows within the site boundary with ivy cover, cavities and cracks which have the potential to be used by roosting bats.